

Created September 2009

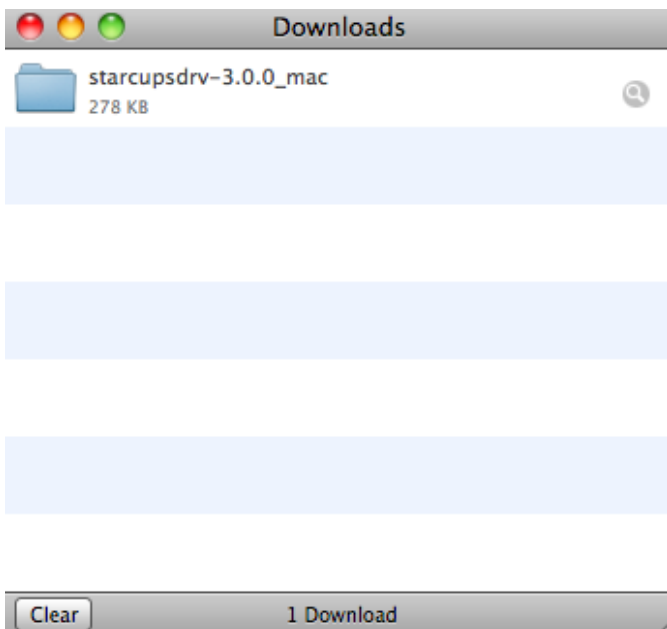
This application note shows how to install a USB TSP100 on Mac OS X Snow Leopard.

1. Download the latest CUPS driver version 3.0 from Star's website from the below link:  
[http://www.star-micronics.co.jp/eng/dl/dl02\\_06\\_02spsd.htm#mac](http://www.star-micronics.co.jp/eng/dl/dl02_06_02spsd.htm#mac)

Driver File needed: starcupsdrv-3.0.0\_mac\_20090130.zip

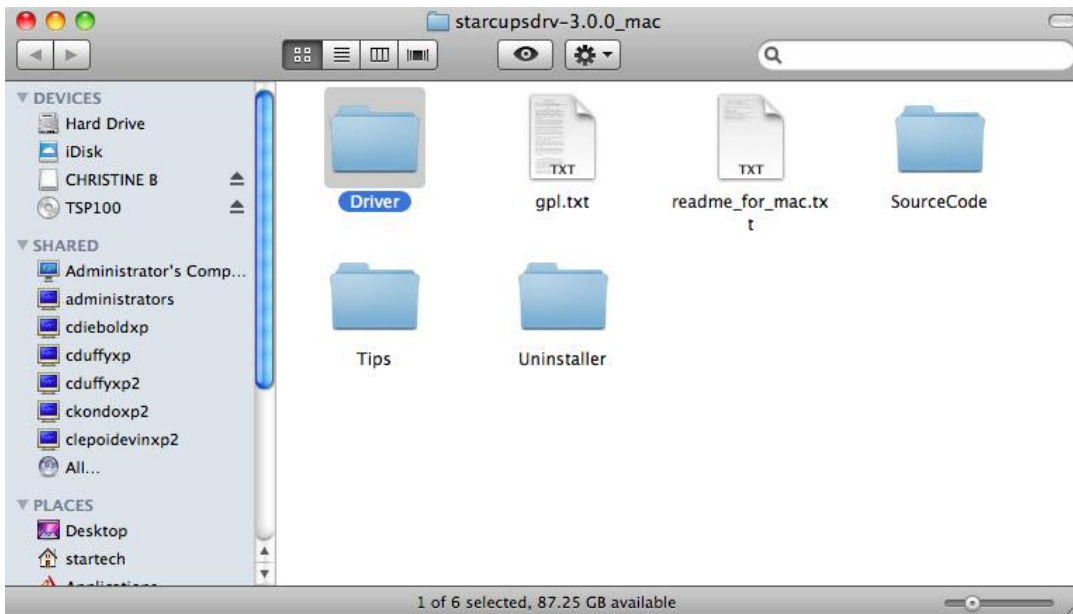
Once you have downloaded the driver, it will show up in the Downloads folder.

\*Note: At this time, you can plug the printer into the computer, but have the power OFF

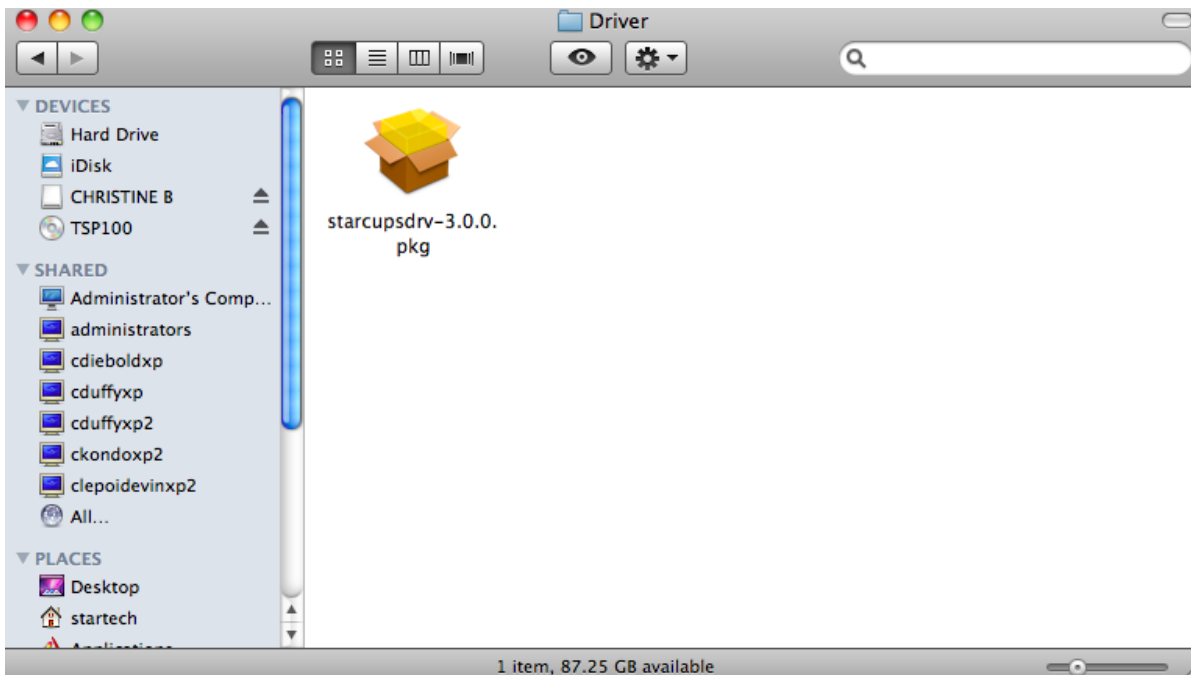


Double click the starcupsdrv-3.0.0\_mac to open.

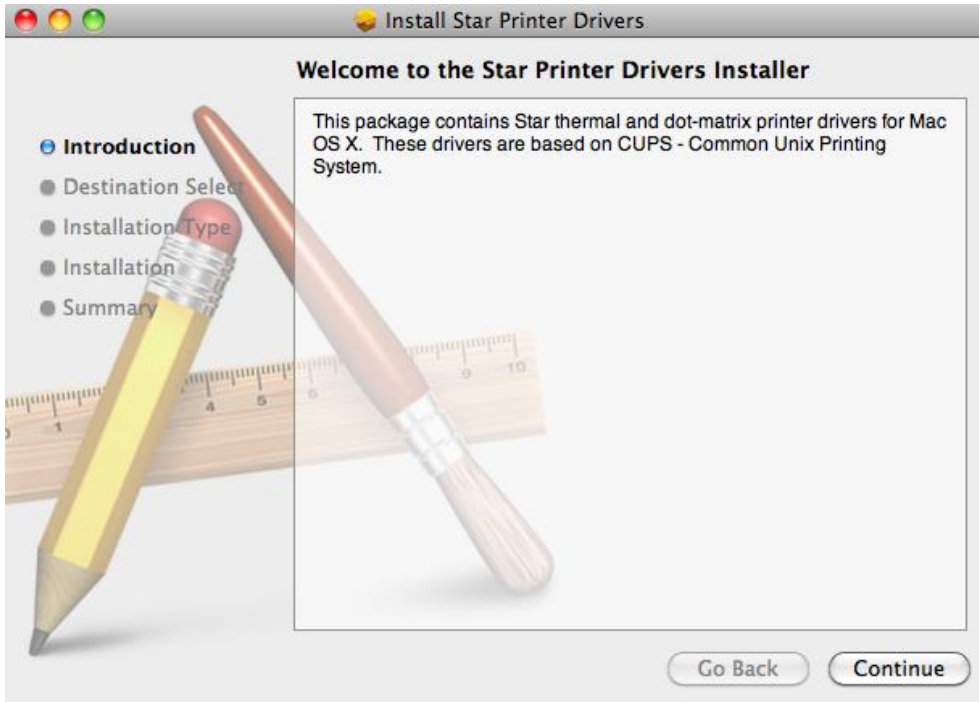
2. Double click the Driver folder



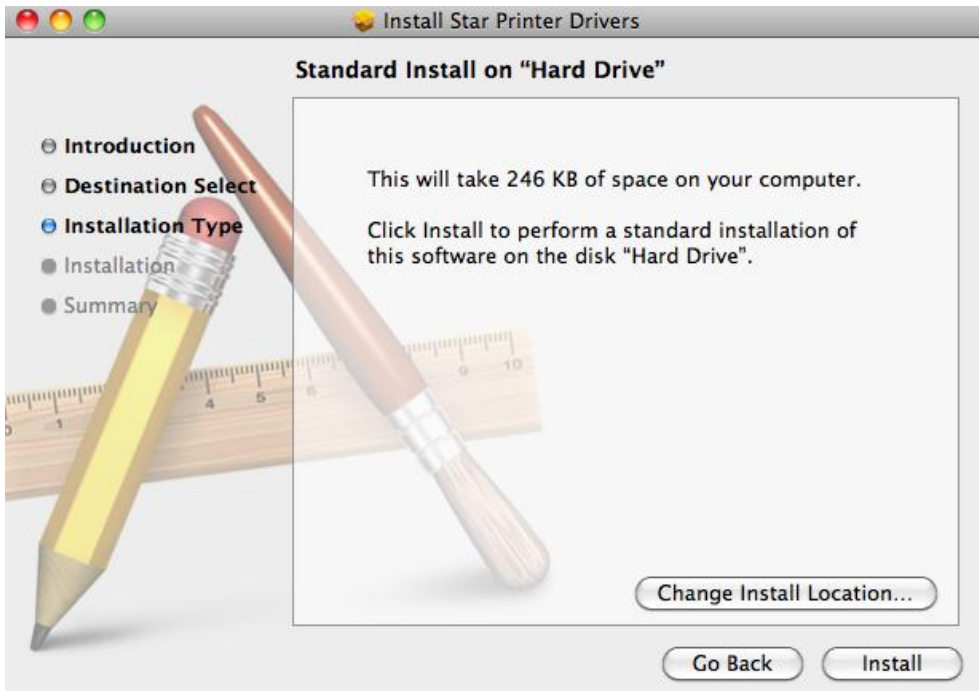
3. Open the starcupsdrv-3.0.0.pkg file



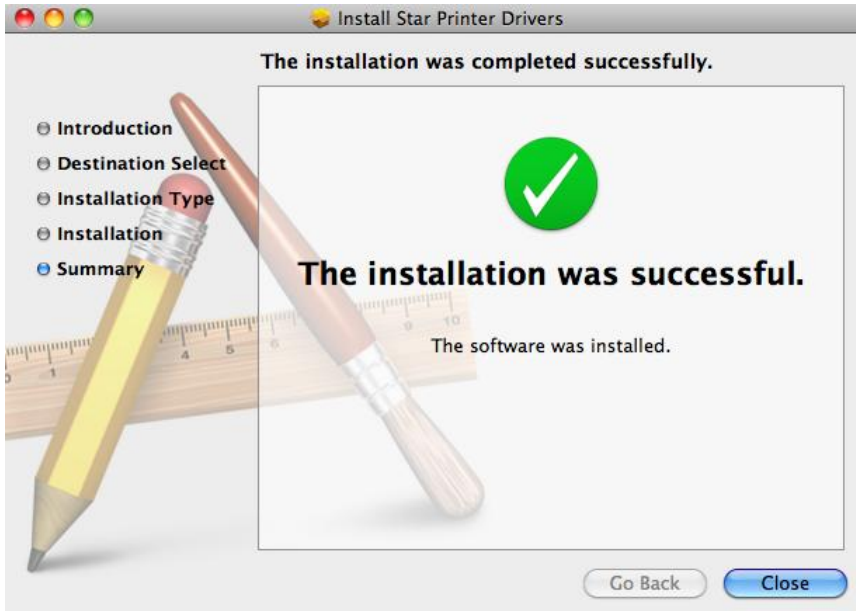
4. It will open the Star Printer Driver Installer then click Continue



5. Click Install to continue the installation



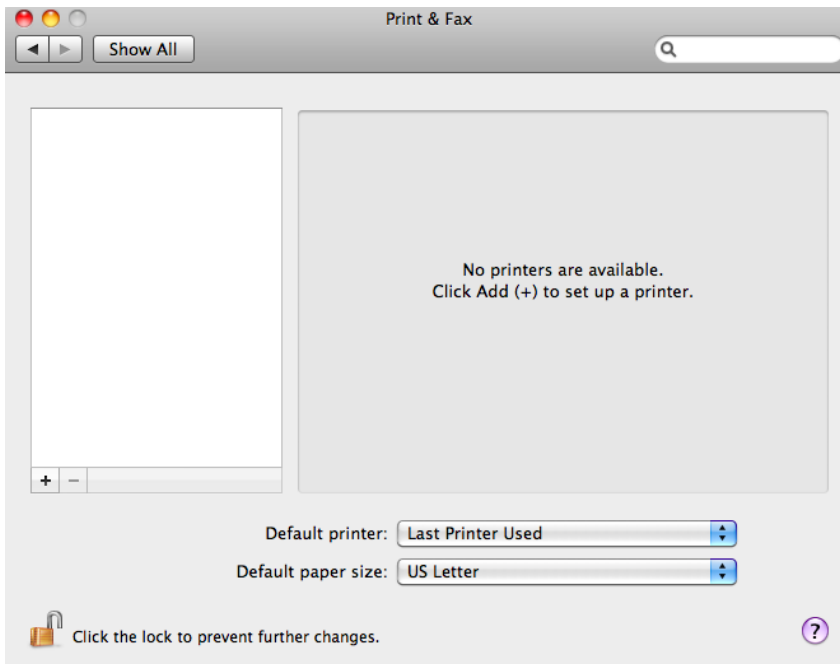
6. It will confirm that the installation is successful then click Close



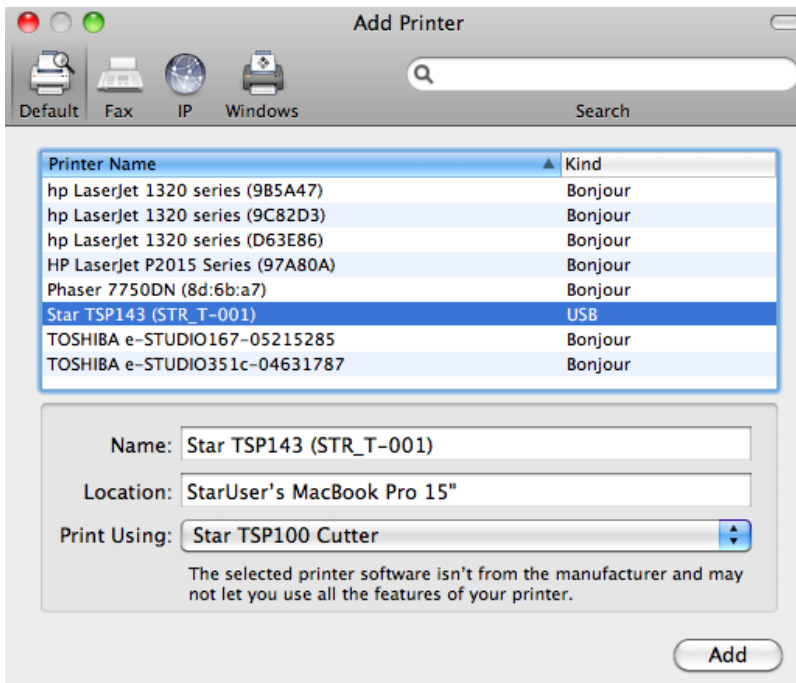
You can turn the printer power ON at this time.

\*Note: the printer will not plug and play and automatically display the printer as it does in earlier versions of MAC OS. You will need to manually add the printer.

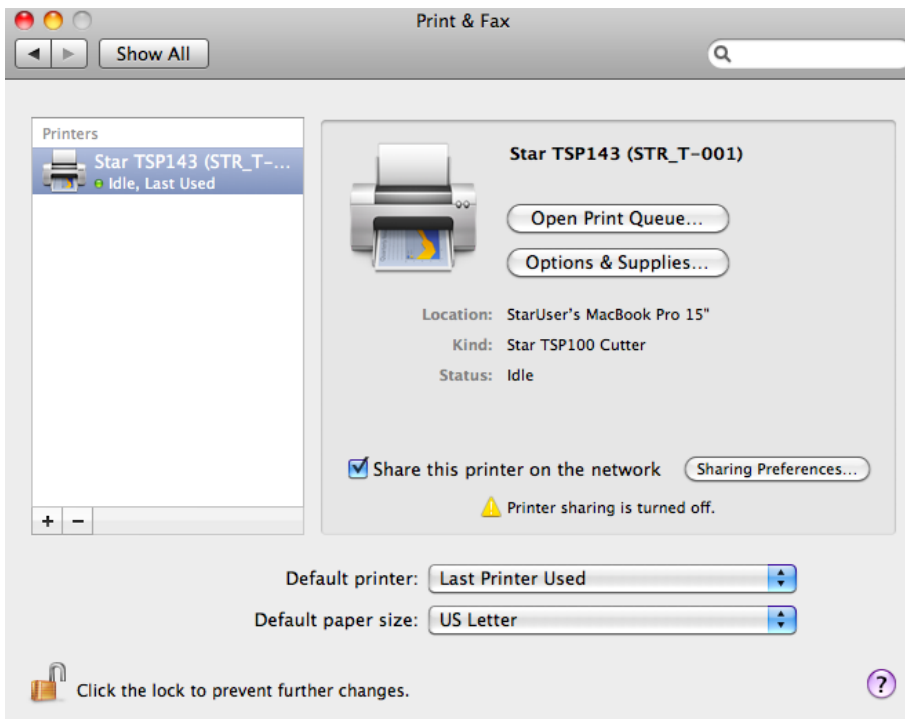
7. Go to System Preferences/Print & Fax
8. On the left side at the bottom, click on the + sign to Add a printer



9. Since the Star CUPS driver is installed, it will automatically add the printer to the list and add the necessary driver.
10. Click Add to continue



11. Now it will display the added printer. Exit Print & Fax



## Configuring the printer in CUPS

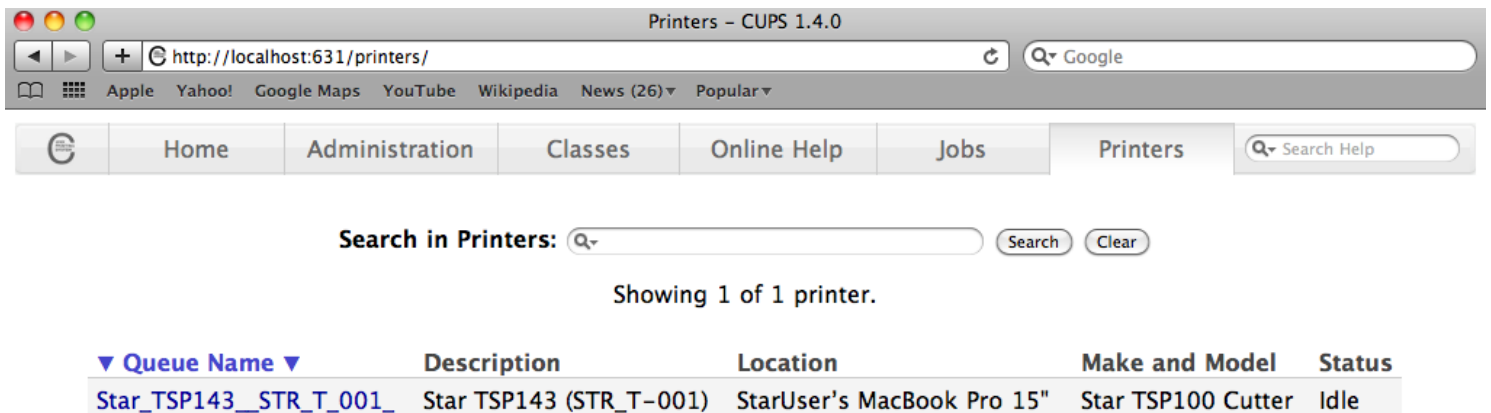
12. Open a web browser (ie: Safari) and type in the address bar:

localhost:631

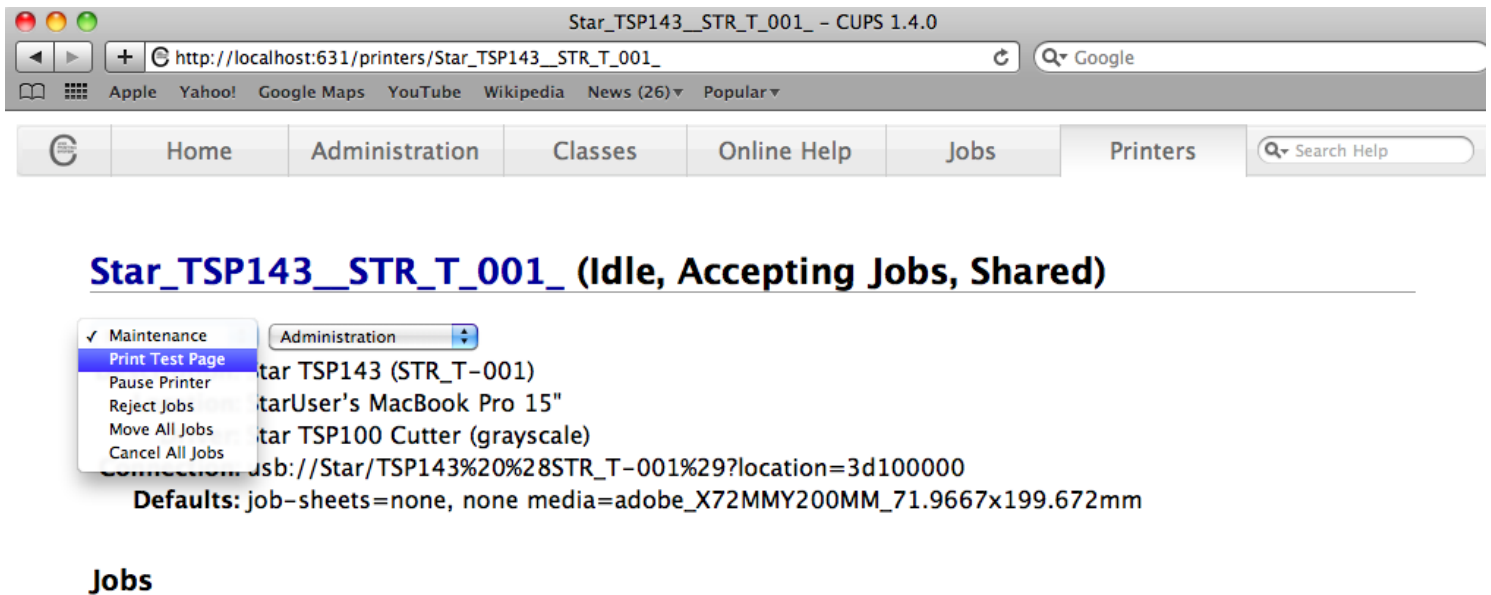
This will open the CUPS page to manage the currently installed printers  
Click on the Printers tab on the far right side



The TSP143 printer will display in the list.  
Click on the Blue printer name to configure the printer



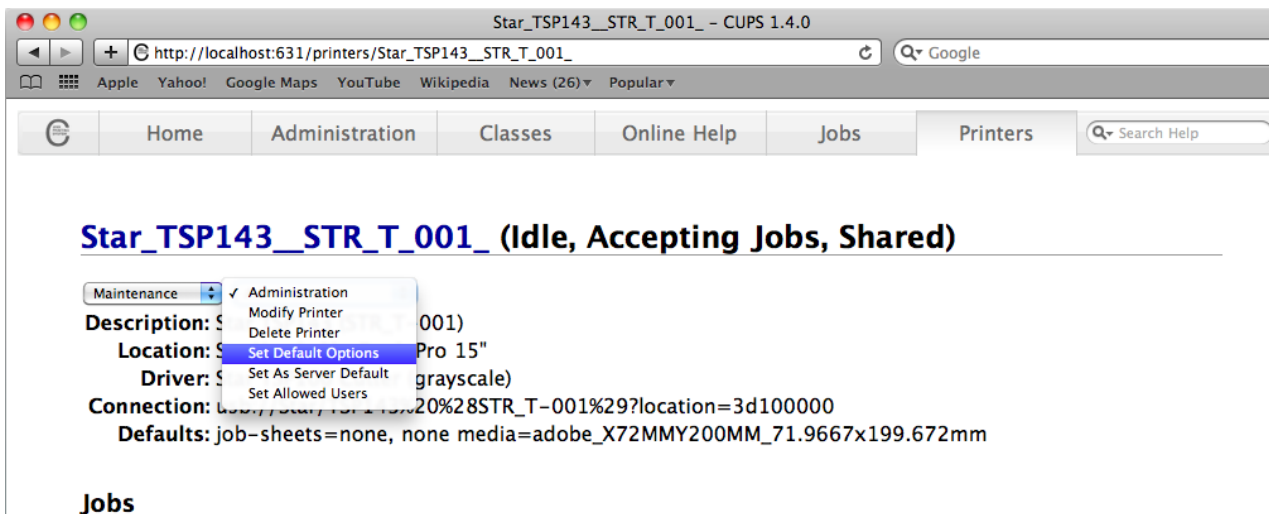
13. To confirm communication with the printer, click on the Maintenance drop down menu and choose Print Test Page



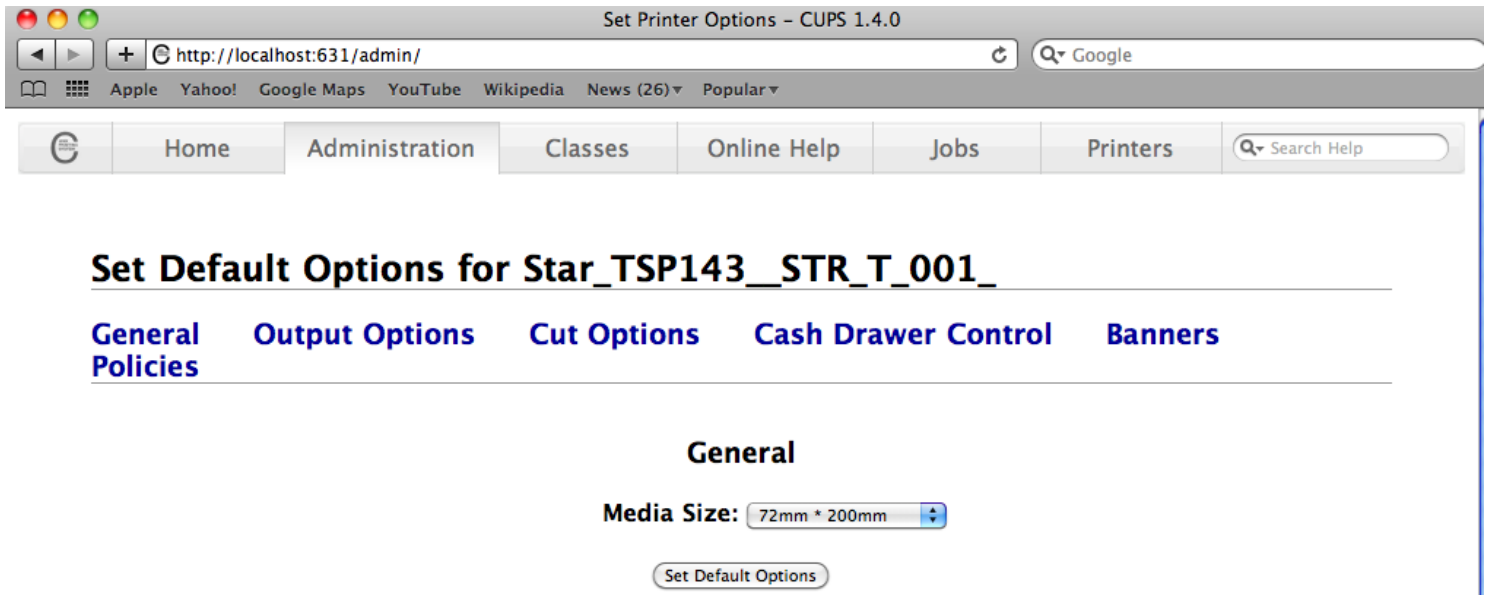
It will process the job

Once the test page comes out, you have communication with the printer and it is successfully installed.

14. To configure the printer, click on the Administration drop down menu and click **Set Default Options**



There are options below that you can configure for the printer.



You have successfully added a TSP100U on Snow Leopard!